

ARCD152, ARCD202

Tamper-Resistant Dual Controlled Outlet

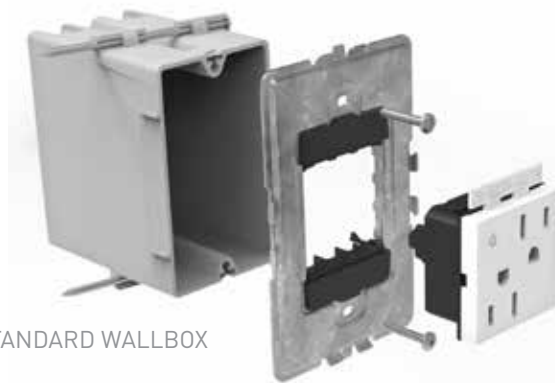
The adorne Dual Controlled Outlet controls both receptacles, which can be turned off for energy efficiency and cost savings. Permanent controlled receptacle marking allows for long-lasting, easy identification of controlled receptacle for end-users. NEMA-approved and compliant with 2014 NEC[®], CA Title 24, and ASHRAE Energy Efficiency Standard 90.1



FEATURES & BENEFITS

adorne devices fit in all existing NEMA-approved wallboxes.

Heavy gauge steel frame is grounded via factory installed 12AWG ground lead. Device and metal wall plates are self-grounded to frame.



STANDARD WALLBOX

FRAME

DEVICE

WALL PLATE

Device snaps into the frame and self-aligns without any screws.

Wall plate snaps onto frame; no screws required.

Modular system solves device alignment problems, improving fit and finish in multi-gang installations.

adorne devices can be installed in any existing standard wallbox.

Backwire terminal screws are recessed into back of body.

Wall plate and frames available in 1-6 gang sizes.

ORDERING INFORMATION

CATALOG NUMBER	DESCRIPTION	RATING	NEMA	COMPLIANCE	COLORS	COO
ARCD152M10	15A TR Dual-Controlled Outlet	15A, 125V	5-15R		Magnesium	China
ARCD152W10	15A TR Dual-Controlled Outlet	15A, 125V	5-15R		White	China
ARCD152G10	15A TR Dual-Controlled Outlet	15A, 125V	5-15R		Graphite	China
ARCD202M10	20A TR Dual-Controlled Outlet	20A, 125V	5-20R		Magnesium	China
ARCD202W10	20A TR Dual-Controlled Outlet	20A, 125V	5-20R		White	China

VERTICAL MARKETS

- Residential
- Hospitality
- Luxury Office
- Light Commercial

COMPLEMENTARY PRODUCTS

adorne® also offers Paddle Style Dimmers and Fan Control Devices to pair with our Paddle Style Switches for an overall, aesthetically pleasing and multi-functional installation.

adorne® Wall Plates provide the perfect complement to adorne Switches, Dimmers, Outlets, and Accessories. The collection includes a variety of finishes, from metals to leather and wood, as well as plastic plates that are available in contemporary and classic colors.

Each wall plate is packaged with a metal frame to enable easy installation when paired with a device. All plates are screwless and simply snap onto the included metal frame.

All adorne wall plates are UL and ETL-approved.



2-Module Paddle Dimmer



2-Module Paddle Fan Speed Control



1-Module Paddle Switch

TECHNICAL SPECIFICATIONS

3rd Party Compliance

cULus Listed, File Number E140597, Standard UL20.

Performance

ELECTRICAL

Maximum Working Voltage	120VAC
Current Rated	15A, 20A Feed Through
Temperature Rise	30°C Maximum at full-rated current

MECHANICAL

Back Wire	With internal pressure plates, #8-32 screw
Terminal Accommodations	#14AWG-#12AWG

ENVIRONMENTAL

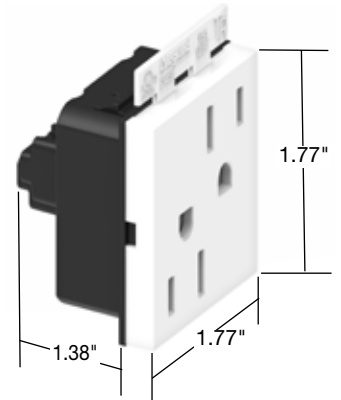
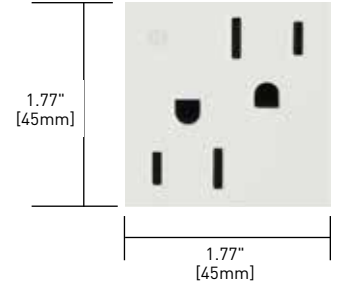
Flammability	UL94 V2
--------------	---------

Materials

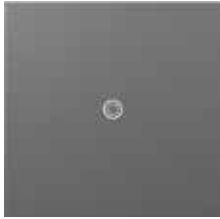
Face	Polycarbonate	Terminal	Brass
Back Body	Polycarbonate	Termination	Steel Plated Screws
Contacts	Silver		

Warranty

Limited Lifetime Warranty



COMPLEMENTARY DEVICES & ACCESSORIES



softTap™

Switches & Dimmers – designed with an innovative micro-movement that turns lights on and off with just a soft “tap” of the finger.



Wave™

Switches – Smart technology combined with sleek, modern design. Simply wave your hand to turn lights on and off.



SensaSwitch™

Switches & Dimmers – Sensor turns lights on when you enter a room and off when you leave. (Also available in Manual-ON/Auto-OFF format.)



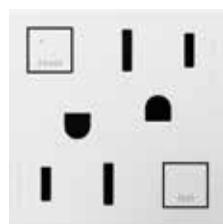
Push™

Switches – A tactile, finger-sized impression lets you turn lights on and off with a simple push-button motion.



Whisper™

Switches & Dimmers – A smart design that features elegant lines and a quiet, fluid motion.



Tamper-Resistant Outlets/ Tamper-Resistant GFCI Outlets



Touch™

Switches & Dimmers – A stunning translucent face works just like an iPhone® – simply touch your finger on the circle to turn lights on and off.



USB Charging Outlets



Paddle™

Switches, Dimmers & Fan Speed Controls – A wide, graceful curve works with a simple up-and-down motion, allowing you to turn lights on and off with ease.



Nightlight/Portable Nightlight Flashlight

PLUS: Compatible Wall Plates, Accent Lights, Locator Lights, Under-Cabinet Lighting System

NOTE: All brand and product names referenced in this document are registered trademarks or trademarks of their respective holders.



NOTE: The paper used to print this document is an environmentally responsible paper with 10% post consumer waste, with FSC and SFI Chain of Custody certifications, Lacey Act compliant. 100% of the electricity used to manufacture Flo sheets is generated with Green-e certified renewable energy.



Legrand, North America
60 Woodlawn Street
West Hartford, CT 06110
1.877.BY.LEGRAND (295.3472)
www.legrand.us

Canada
905.738.9195
www.legrand.ca

FOLLOW US

